

ECONOMIC INDICATORS

NEW SOUTH WALES

EMBARGO: 11:30AM (CANBERRA TIME) WED 15 NOV 2000

CONTENTS

	<i>Page</i>
Notes	2
NSW overview.....	3
Main features.....	4
List of tables and graphs	5
Population	6
Labour.....	7
Production	10
Building.....	11
Retail trade	12
New motor vehicle registrations	13
Tourism	14
Consumer and producer price indexes.....	15
Finance	16
State Government finance	17
Investment.....	18
International trade.....	19

PLEASE NOTE:
Some of the figures
in this publication
will be affected by the GST.
See Data Notes on page 2.

- For further information about these and related statistics, contact Jill Tomlinson on Sydney 02 9268 4123, or the National Information Service on 1300 135 070.

NOTES

FORTHCOMING ISSUES

<i>ISSUE</i>	<i>ISSUE DATE</i>
December 2000	15 December 2000
January 2001	15 January 2001
February 2001	15 February 2001
March 2001	15 March 2001
April 2001	17 April 2001
May 2001	15 May 2001

DATA NOTES

ABS statistical series are being impacted to varying degrees as a result of The New Tax System (TNTS), introduced in Australia from 1 July 2000. TNTS included the removal of Wholesale Sales Tax and the introduction of a Goods and Services Tax (GST), and as a result, a wide range of ABS data series will reflect significant immediate and subsequent impacts. For further information see *Australian Economic Indicators*, July 2000 (Cat. no. 1350.0).

GENERAL

This publication provides information on a wide range of economic indicators which are the latest available at the time of publication. In a number of cases, figures appearing in this summary are preliminary and are subject to revision in subsequent issues.

SEASONAL ADJUSTMENT AND TREND ESTIMATION

Seasonal adjustment is a means of removing the estimated effects of normal seasonal variation from a series so that the effects of other variations on that series can be more clearly recognised. This means that movements of seasonally adjusted estimates may not be reliable indicators of trend behaviour. Smoothing seasonally adjusted series produces a measure of the underlying trend by reducing the impact of the irregular component of the series. For an explanation of seasonal adjustment derivation, refer to the publication *Seasonally Adjusted Indicators* (Cat. no. 1308.0).

SYMBOLS AND OTHER USAGES

kWh	kilowatt hour
teraJ	terajoule
n.a.	not available
n.p.	not available for publication but included in totals where applicable
n.y.a	not yet available
r	figure or series revised since previous issue
. .	not applicable
—	nil or rounded to zero
—	break in continuity of series (where a line is drawn across a column between two consecutive figures)

Geoff Smith
Regional Director
New South Wales

NSW OVERVIEW

EMPLOYMENT	Employment in NSW in September 2000 was a seasonally adjusted figure of 3,059,700. National employment in September 2000 was 9,111,400.
UNEMPLOYMENT	Unemployment in NSW was a seasonally adjusted figure of 176,800 in September 2000, while the unemployment rate remained stable at 5.5%. The national unemployment rate was 6.3% in September 2000.
INDUSTRIAL DISPUTES	In NSW in July 2000 there were 7,500 working days lost due to industrial disputes, a decrease of 54% on the working days lost in the previous month. Nationally there were 21,900 working days lost due to industrial disputes in July 2000.
BUILDING APPROVALS	The seasonally adjusted number of new dwelling units approved for NSW in September 2000 increased by almost 27% from the previous month to 2,430 dwelling units. This was a decrease of 48.5% on the corresponding month of the previous year. Nationally, there were 9,041 new dwelling units, a decrease of 1.1% from the previous month.
RETAIL	In seasonally adjusted terms, total retail sales for NSW in August 2000 was \$4,445.7 million. This was an increase of 7.2% from the previous month.
NEW MOTOR VEHICLE REGISTRATIONS	New motor vehicle registrations for NSW in seasonally adjusted terms in September 2000 increased by 2.7% compared to the previous month to 26,947 registrations.
TOURISM	In NSW the room occupancy rate for the June quarter increased by 0.2 percentage points to 58.1% compared with the previous June quarter. This was a decrease of 2.2 percentage points compared with the March quarter 2000.
CONSUMER PRICE INDEX (CPI)	The Consumer Price Index (CPI) for September Quarter 2000 for Sydney was 131.6, an increase of 3.6% since the June Quarter and an increase of 6.0% since September 1999.
FINANCE	The seasonally adjusted value of housing finance commitments for owner occupation in NSW in August 2000 was \$2,257 million, an increase of 7.1% on the previous month and an overall decrease of 10.6% on August 1999.
IMPORTS AND EXPORTS	The customs value of imports into NSW during August 2000 was \$4,988 million, an increase of 10.6% on July 2000. The value of exports (FOB) from NSW in August 2000 was \$1,814 million, an increase of 2.1% over the same period.
GOVERNMENT FINANCE STATISTICS (GFS)	The General Government GFS cash result for the year ended 30 June 2000 was an underlying surplus of \$869 million. The result comprises a surplus of \$3,279 million on current transactions and a deficit of \$2,410 million on capital transactions.

MAIN FEATURES

TOURISM

In NSW the number of room nights occupied in licensed hotels, motels and guest houses and serviced apartments with 15 or more rooms or units in the June quarter 2000 decreased by 1.9% on the March quarter 2000 to 3,324,000. Compared with the June quarter 1999 this was an increase of 7.2%. At the national level, the number of room nights occupied decreased by 0.9% compared with the March quarter 2000 while there was a 6.1% increase on the number of room nights occupied during the June quarter 1999. In NSW the room occupancy rate for licensed hotels, motels and guest houses and serviced apartments in the June quarter 2000 was 58.1%, an increase of 0.2 percentage points from the June quarter 1999.

In the Sydney Tourism region, room occupancy rate for the June quarter 2000 for accommodation establishments overall was 67.1%, a decrease of 0.9 percentage points over the year. For the June quarter 2000 room occupancy rates for licensed hotels fell by 0.8 percentage points compared with the corresponding quarter in 1999 to 69.9%. The occupancy rate for motels and guest houses increased by 1.2 percentage points to 63.5%, while for serviced apartments there was a decrease in occupancy rate of 6.6 percentage points to 62.7%.

In NSW takings from accommodation increased in aggregate for each accommodation type in the June quarter 2000 compared with the June quarter 1999 with an overall increase of 12.4% to \$374.0 million. In the Sydney Tourism Region, takings from accommodation were \$258.2 million for the June quarter 2000 accounting for over 69% of the total for NSW.

For the four quarters of 2000 the scope of the Survey of Tourist Accommodation has been expanded. Further details are published in *Tourist Accommodation, Australia* (Cat no. 8635.0) and *Tourist Accommodation, Small Area Data, NSW, March Quarter 2000* (Cat no. 8635.1.40.001).

FINANCE

The seasonally adjusted estimate for the value of housing finance commitments in NSW was \$2,257 million in August 2000, a rise of 7.1% from July 2000 and an overall decrease of 10.6% since August 1999. Nationally, the seasonally adjusted value of lending commitments for housing finance rose by 6.1% to \$5,665 million in August 2000 and was 5.5% lower than in August 1999.

In original terms, total commitments in NSW in August 2000 fell by 5.5% to \$2,430 million, compared to August 1999. Over the same period, there were decreases in all contributing indicators, with the exception of commitments for re-financing of existing dwellings which rose by 18.2% to \$468 million. Commitments to purchase established dwellings decreased 4.9% to \$1,712 million and commitments for the purchase of newly erected dwellings fell by 5.6% to \$85 million. Commitments for the construction of dwellings also fell, down 42.3% to \$165 million.

LIST OF TABLES AND GRAPHS

page

POPULATION	1 Estimated Resident Population, NSW	6
LABOUR	2 Labour data, latest time period, NSW and Australia	7
	3 Labour data, time series, NSW	7
	4 Labour force status of the civilian population, NSW	8
	5 Graph: Unemployment rates, NSW and Australia	9
	6 Coal, electricity and gas production, latest time period, NSW and Australia	10
PRODUCTION	7 Coal, electricity and gas production, time series, NSW	10
BUILDING	8 Building approvals, latest time period, NSW and Australia	11
	9 Building approvals, time series, NSW	11
RETAIL TRADE	10 Turnover of retail establishments, latest time period, NSW and Australia	12
	11 Turnover of retail establishments, seasonally adjusted, time series, NSW	12
NEW MOTOR VEHICLE REGISTRATIONS	12 New motor vehicle registrations, latest time period, NSW and Australia	13
	13 New motor vehicle registrations, seasonally adjusted, time series, NSW	13
TOURISM	14 Accommodation Establishments, latest time period, NSW and Australia	14
	15 Accommodation Establishments, time series, Sydney and NSW	14
	16 Graph: Hotels, motels etc., monthly room occupancy rates, Sydney Tourism Region and NSW	14
CONSUMER AND PRODUCER PRICE INDEXES	17 Consumer and producer price indexes, latest time period, NSW and Australia	15
	18 Consumer and producer price indexes, time series, NSW	15
	19 Graph: Consumer Price Index, Sydney and average of 8 capital cities	15
FINANCE	20 Finance commitments, latest time period, NSW and Australia	16
	21 Finance commitments, time series, NSW	16
STATE GOVERNMENT FINANCE	22 Government finance, budget sector, time series, NSW	17
INVESTMENT	23 Actual private new fixed capital expenditure, latest time period, NSW and Australia	18
	24 Actual private new fixed capital expenditure, time series, NSW	18
	25 Graph: Actual private new fixed capital expenditure by type of asset, trend estimate, NSW	18
INTERNATIONAL TRADE	26 Imports and exports, latest time period, NSW and Australia	19
	27 Imports and exports, time series, NSW	19

1 ESTIMATED RESIDENT POPULATION—NSW

	<i>Estimated resident population at end of period</i>			<i>Increase during period</i>			<i>Mean estimated resident population for year ended</i>	
	<i>Males</i>	<i>Females</i>	<i>Persons</i>	<i>Natural increase(a)</i>	<i>Net estimated migration</i>	<i>Total increase(b)</i>	<i>30 June</i>	<i>31 December</i>
	<i>'000</i>	<i>'000</i>	<i>'000</i>	<i>'000</i>	<i>'000</i>	<i>'000</i>	<i>'000</i>	<i>'000</i>
1997	3 129.0	3 171.5	6 300.5	40.9	17.6	58.5	6 240.9	6 276.1
1998	3 164.5	3 204.0	6 368.5	39.9	28.1	68.1	6 303.5	6 335.7
1999	3 199.8	3 236.9	6 436.7	42.3	25.8	68.2	6 367.3	6 398.3
1998								
December qtr	3 164.5	3 204.0	6 368.5	10.8	4.2	15.0
1999								
March qtr	3 171.0	3 210.5	6 381.5	10.7	2.3	13.0
June qtr	3 179.2	3 217.5	6 396.7	10.1	5.1	15.2
September qtr	3 188.3	3 225.5	6 413.7	8.1	8.9	17.0
December qtr	3 199.8	3 236.9	6 436.7	13.4	9.5	22.9
2000								
March qtr	3 206.4	3 242.4	6 448.8	7.6	4.5	12.1

(a) Excess of live births over deaths.

(b) For dates prior to June 1996, differences between the total increase shown and the sum of the natural increase and net estimated migration arise from retrospective adjustments to population estimates (which are made after each Census) to compensate for any intercensal discrepancy. A description of intercensal discrepancy is contained in the ABS Information Paper: Demographic Estimates—Concepts, Sources and Methods (Cat. no. 3228.0).

Source: Australian Demographic Statistics (Cat. no. 3101.0).

2 LABOUR—NSW AND AUSTRALIA

	Unit	Latest period	New South Wales				Australia		
			Latest figure	Change from prior period	Change from same period prior year	Latest figure	Change from prior period	Change from same period prior year	
				%	%	no.	%	%	
Employed persons (seasonally adjusted)	'000	September 2000	3 059.7	-0.3	3.8	9 111.4	-0.3	3.2	
Unemployed persons (seasonally adjusted)	'000	September 2000	176.8	-1.0	-18.8	613.5	-1.6	-11.6	
Labour force (seasonally adjusted)	'000	September 2000	3 236.5	-0.4	2.2	9 724.8	-0.4	2.1	
Participation rate (seasonally adjusted)	%	September 2000	62.7	-0.5	0.8	63.7	-0.6	0.6	
Unemployment rate (seasonally adjusted)	%	September 2000	5.5	0.0	-20.3	6.3	-1.6	-13.7	
Industrial disputes—working days lost	'000	July 2000	7.5	-54.0	-67.9	21.9	-64.4	-54.4	
Job vacancies	'000	August 2000	43.9	5.0	-9.1	127.7	19.6	16.1	
Average weekly employee earnings—full-time adult ordinary time earnings (seasonally adjusted)	\$	May 2000	825.4	1.7	4.2	783.4	1.2	4.3	

Source: Average Weekly Earnings, States and Australia (Cat. no. 6302.0); Industrial Disputes, Australia (Cat. no. 6321.0); Job Vacancies, Australia (Cat. no. 6354.0); Labour Force, Australia, Preliminary (Cat. no. 6202.0).

3 LABOUR—NSW

	Seasonally adjusted						
	Employed persons	Unemployed persons	Labour force	Participation rate	Unemployment rate	Industrial disputes (working days lost)	Job vacancies
	'000	'000	'000	%	%	'000	'000
1999							
July	2 938.2	192.1	3 130.3	61.6	6.1	23.4	..
August	2 936.1	208.2	3 144.3	61.8	6.6	32.2	48.3
September	2 948.9	217.8	3 166.7	62.2	6.9	33.8	..
October	2 967.0	190.0	3 157.0	61.9	6.0	16.7	..
November	2 960.5	176.9	3 137.4	61.5	5.6	121.4	36.9
December	2 971.5	199.9	3 171.4	62.0	6.3	29.1	..
2000							
January	2 974.0	189.5	3 163.5	61.8	6.0	7.5	..
February	3 004.5	186.4	3 190.9	62.3	5.8	20.1	46.4
March	3 013.9	193.3	3 207.2	62.5	6.0	11.8	..
April	3 038.2	181.8	3 220.0	62.7	5.6	20.0	..
May	3 053.4	185.1	3 238.5	63.0	5.7	47.1	41.8
June	3 038.4	187.9	3 226.3	62.7	5.8	r 16.3	..
July	3 060.2	173.4	3 233.6	62.7	5.4	7.5	..
August	3 070.3	178.6	3 248.9	63.0	5.5	n.y.a.	43.9
September	3 059.7	176.8	3 236.5	62.7	5.5	n.y.a.	..

Source: Industrial Disputes, Australia (Cat. no. 6321.0); Job Vacancies, Australia (Cat. no. 6354.0); Labour Force, Australia, Preliminary (Cat. no. 6202.0).

4 LABOUR FORCE STATUS, NSW—ORIGINAL

	<i>Employed</i>		<i>Unemployed</i>		<i>Labour force</i>	<i>Not in labour force</i>	<i>Civilian population aged 15 years and over</i>	<i>Unemployment rate(a)</i>	<i>Participation rate(b)</i>
	<i>Full-time workers</i>	<i>Total</i>	<i>Looking for full-time work</i>	<i>Total</i>					
	'000	'000	'000	'000					
MALES									
September									
1996	1 424.6	1 604.0	124.5	143.9	1 747.9	650.8	2 398.7	8.2	72.9
1997	1 433.7	1 612.7	124.0	145.6	1 758.3	672.0	2 430.3	8.3	72.3
1998	1 466.6	1 649.3	117.0	134.2	1 783.4	681.8	2 465.2	7.5	72.3
1999									
July	1 491.8	1 687.4	83.2	101.3	1 788.7	707.7	2 496.4	5.7	71.7
August	1 464.1	1 662.6	95.9	115.3	1 777.8	721.6	2 499.4	6.5	71.1
September	1 502.7	1 696.2	97.6	124.8	1 820.9	681.5	2 502.4	6.9	72.8
October	1 504.7	1 688.4	87.4	105.5	1 793.9	712.6	2 506.4	5.9	71.6
November	1 498.9	1 681.8	81.4	95.1	1 777.0	733.5	2 510.5	5.4	70.8
December	1 530.2	1 711.0	95.2	116.1	1 827.0	687.5	2 514.5	6.4	72.7
2000									
January	1 497.6	1 680.2	104.8	119.9	1 800.1	717.6	2 517.7	6.7	71.5
February	1 503.6	1 694.0	95.8	113.8	1 807.8	713.1	2 520.9	6.3	71.7
March	1 494.2	1 701.8	93.5	114.1	1 815.9	708.2	2 524.0	6.3	71.9
April	1 504.7	1 716.6	81.8	100.5	1 817.1	710.5	2 527.6	5.5	71.9
May	1 504.2	1 719.5	79.7	98.2	1 817.7	713.5	2 531.1	5.4	71.8
June	1 517.3	1 718.7	86.3	100.5	1 819.2	715.5	2 534.7	5.5	71.8
July	1 528.2	1 732.5	81.4	99.6	1 832.1	705.5	2 537.6	5.4	72.2
August	1 492.5	1 701.7	87.1	101.2	1 802.8	737.7	2 540.5	5.6	71.0
September	1 519.3	1 738.0	85.8	106.6	1 844.6	698.9	2 543.5	5.8	72.5
FEMALES									
September									
1996	723.8	1 210.0	65.8	103.3	1 313.3	1 177.0	2 490.4	7.9	52.7
1997	724.3	1 228.1	62.7	95.5	1 323.5	1 198.1	2 521.6	7.2	52.5
1998	756.9	1 276.0	61.7	97.1	1 373.1	1 180.6	2 553.7	7.1	53.8
1999									
July	754.9	1 265.7	53.2	76.5	1 342.2	1 239.8	2 582.0	5.7	52.0
August	723.4	1 237.1	54.9	86.7	1 323.8	1 261.2	2 584.9	6.5	51.2
September	749.9	1 285.6	61.3	97.6	1 383.2	1 204.7	2 587.9	7.1	53.4
October	767.2	1 289.1	51.3	77.1	1 366.2	1 225.1	2 591.3	5.6	52.7
November	756.5	1 283.3	50.5	71.8	1 355.1	1 239.7	2 594.8	5.3	52.2
December	788.4	1 307.0	54.7	80.9	1 387.9	1 210.4	2 598.3	5.8	53.4
2000									
January	776.9	1 257.2	55.3	80.7	1 337.9	1 262.8	2 600.7	6.0	51.4
February	755.7	1 282.3	57.0	98.2	1 380.5	1 222.7	2 603.2	7.1	53.0
March	771.1	1 307.8	57.0	92.4	1 400.2	1 205.4	2 605.6	6.6	53.7
April	791.3	1 318.7	52.1	82.4	1 401.1	1 207.3	2 608.4	5.9	53.7
May	784.9	1 324.9	53.2	83.7	1 408.7	1 202.5	2 611.2	5.9	53.9
June	783.4	1 326.0	39.8	76.1	1 402.2	1 211.8	2 614.0	5.4	53.6
July	812.3	1 344.0	36.0	60.9	1 404.8	1 211.8	2 616.7	4.3	53.7
August	787.2	1 329.4	40.1	72.3	1 401.7	1 217.6	2 619.3	5.2	53.5
September	805.6	1 356.4	43.0	73.9	1 430.3	1 191.7	2 622.0	5.2	54.6

(a) For footnotes see end of table.

4 LABOUR FORCE STATUS, NSW—ORIGINAL—continued

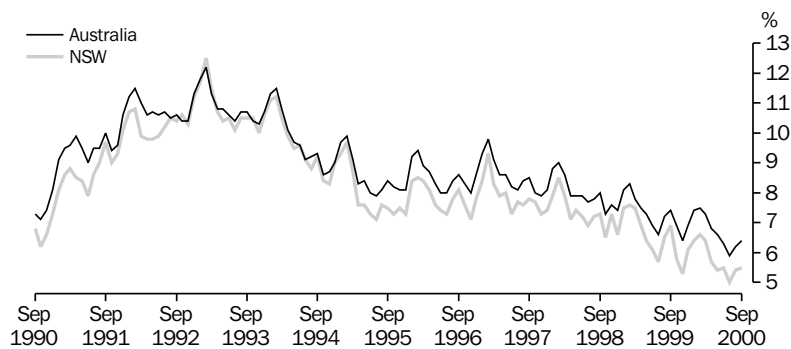
	<u>Employed</u>		<u>Unemployed</u>		<u>Labour force</u>	<u>Not in labour force</u>	<u>Civilian population aged 15 years and over</u>	<u>Unemployment rate(a)</u>	<u>Participation rate(b)</u>
	<u>Full-time workers</u>	<u>Total</u>	<u>Looking for full-time work</u>	<u>Total</u>					
	'000	'000	'000	'000					
PERSONS									
September									
1996	2 148.4	2 814.0	190.2	247.2	3 061.2	1 827.8	4 889.0	8.1	62.6
1997	2 158.0	2 840.8	186.6	241.0	3 081.8	1 870.1	4 951.9	7.8	62.2
1998	2 223.5	2 925.2	178.7	231.3	3 156.5	1 862.4	5 018.9	7.3	62.9
1999									
July	2 246.7	2 953.2	136.4	177.8	3 131.0	1 947.5	5 078.5	5.7	61.7
August	2 187.6	2 899.6	150.8	202.0	3 101.6	1 982.8	5 084.4	6.5	61.0
September	2 252.6	2 981.8	158.9	222.4	3 204.2	1 886.2	5 090.3	6.9	62.9
October	2 271.8	2 977.5	138.6	182.6	3 160.1	1 937.7	5 097.8	5.8	62.0
November	2 255.4	2 965.1	131.9	167.0	3 132.1	1 973.2	5 105.3	5.3	61.3
December	2 318.6	3 017.9	149.9	197.0	3 214.9	1 897.9	5 112.8	6.1	62.9
2000									
January	2 274.5	2 937.4	160.1	200.6	3 138.0	1 980.4	5 118.4	6.4	61.3
February	2 259.3	2 976.3	152.8	212.0	3 188.3	1 935.7	5 124.0	6.6	62.2
March	2 265.4	3 009.6	150.4	206.5	3 216.1	1 913.6	5 129.7	6.4	62.7
April	2 296.0	3 035.3	133.9	182.9	3 218.2	1 917.8	5 136.0	5.7	62.7
May	2 289.1	3 044.4	132.8	181.9	3 226.3	1 916.0	5 142.3	5.6	62.7
June	2 300.6	3 044.7	126.0	176.6	3 221.3	1 927.3	5 148.6	5.5	62.6
July	2 340.5	3 076.5	117.4	160.5	3 237.0	1 917.3	5 154.3	5.0	62.8
August	2 279.7	3 031.1	127.2	173.4	3 204.6	1 955.3	5 159.9	5.4	62.1
September	2 324.9	3 094.4	128.9	180.5	3 274.9	1 890.6	5 165.5	5.5	63.4

(a) The number of unemployed in each group expressed as a percentage of the labour force in the same group.

(b) The labour force in each group expressed as a percentage of the civilian population aged 15 years and over in the same group.

Source: Labour Force, Australia, Preliminary (Cat. no. 6202.0).

5 UNEMPLOYMENT RATE—ORIGINAL



Source: Labour Force, Australia, Preliminary (Cat. no. 6202.0)

6 COAL, ELECTRICITY AND GAS PRODUCTION, NSW AND AUSTRALIA—ORIGINAL

	Unit	Latest period	New South Wales			Australia		
			Latest figure	Change	Change	Latest figure	Change	Change
				from prior period	from same period prior year		from prior period	from same period prior year
			%	%		%	%	
Raw coal won								
Underground	'000 tonnes	July 2000	3 958	4.4	-4.3	7 691	5.1	2.5
Open cut	'000 tonnes	July 2000	6 161	-4.4	-1.7	17 942	0.8	1.6
Total	'000 tonnes	July 2000	10 119	-1.1	-2.8	25 632	2.0	1.8
Electricity	mill. kWh	June qtr 2000	17 334	6.1	5.9	47 374	2.9	4.7
Gas(a)	teraJ	June qtr 2000	n.p.	n.p.	n.p.	198 931	30.2	9.3

(a) Available for issue through mains. Includes ACT.

Source: Joint Coal Board for NSW and Australia from ABS unpublished statistics, Manufacturing Production, Australia (Cat. no. 8301.0).

7 COAL, ELECTRICITY AND GAS PRODUCTION, NSW—ORIGINAL

	Raw coal won			Electricity	Gas(a)
	Underground	Open cut	Total		
	'000 tonnes	'000 tonnes	'000 tonnes		
1997-98	58 299	75 710	134 009	61 804	111 665
1998-99	51 158	80 209	131 367	63 743	110 092
1999-2000	52 709	80 186	132 895	65 934	n.p.
1999					
April	3 525	5 768	9 293	16 365	30 428
May	4 664	6 303	10 967		
June	5 209	7 448	12 657		
July	4 560	6 706	11 266	16 977	32 555
August	3 861	6 442	10 303		
September	5 467	8 408	13 875		
October	4 015	6 369	10 384	15 284	26 029
November	4 573	6 323	10 596		
December	5 918	6 967	11 985		
2000					
January	3 633	5 907	9 541	16 339	n.p.
February	3 834	6 376	10 210		
March	4 799	6 549	11 348		
April	3 854	5 084	8 938	17 334	n.p.
May	5 601	8 611	14 212		
June	3 793	6 443	10 237		
July	3 958	6 161	10 119	n.a.	n.a.

(a) Available for issue through mains. Includes ACT.

(b) Recent advice indicates that Gas will remain confidential and therefore will be taken out of the table from the next issue.

Source: Joint Coal Board, Manufacturing Production, Australia (Cat. no. 8301.0).

8 BUILDING APPROVALS—NSW AND AUSTRALIA

	Unit	Latest period	New South Wales			Australia		
			Latest figure	Change from prior period	Change from same period prior year	Latest figure	Change from prior period	Change from same period prior year
				%	%		%	%
Number of dwelling units(a) (seasonally adjusted(b))								
New houses	no.	August 2000	1 486	12.2	-43.2	5 952	1.3	-39.5
Total	no.	August 2000	2 430	26.6	-48.5	9 041	-1.1	-39.3
Value of new residential building (seasonally adjusted)	\$m	August 2000	370.3	29.6	-41.4	1 172.1	1.3	-34.6
Value of alterations and additions to residential building(c) (seasonally adjusted)	\$m	August 2000	75.9	1.9	-33.9	241.0	-7.3	-22.5
Value of non-residential building(d) (original)	\$m	August 2000	273.1	-4.0	-46.3	980.6	-17.3	-11.3
Value of all building (original)	\$m	August 2000	755.7	13.2	-41.3	2 513.8	-4.6	-23.6

(a) Includes dwelling units approved as part of the construction of non-residential building and alterations and additions to existing buildings (including conversions to dwelling units).

(b) Seasonally adjusted and trend estimates to April 2000 have been revised. See Building Approvals, Australia (Cat. no. 8731.0).

(c) Valued at \$10,000 or more. Includes conversions of existing buildings into residential buildings.

(d) Valued at \$50,000 or more.

Source: Building Approvals, Australia (Cat. no. 8731.0).

9 BUILDING APPROVALS—NSW

	Number of dwelling units(a), seasonally adjusted				Value of building approvals(b)			
	New houses		Total		Seasonally adjusted		Original	
	Private sector	Total	Private sector	Total	New residential building	Alterations and additions to residential building(c)	Non-residential building(d)	All building
	no.	no.	no.	no.	\$m	\$m	\$m	\$m
1996-97	5 169.2	11 356.6
1997-98	5 910.9	13 348.6
1998-99	4 543.4	11 932.3
1999								
June	2 518	2 533	4 244	4 382	585.9	91.7	503.7	1 173.7
July	2 692	2 705	4 208	4 365	601.9	109.0	523.6	1 268.5
August	2 611	r 2 615	4 609	r 4 721	r 631.8	r 114.9	509.0	r 1 287.7
September	2 321	2 355	4 422	4 467	538.8	111.8	260.5	935.5
October	2 712	2 737	4 468	4 609	569.3	116.0	266.0	897.3
November	2 755	2 774	4 119	4 192	514.0	104.4	264.1	978.8
December	2 958	2 975	4 387	4 433	562.6	113.9	278.1	948.5
2000								
January	2 675	2 689	4 142	4 235	606.4	91.9	359.2	935.6
February	2 802	2 818	4 171	4 285	556.4	122.0	279.5	936.4
March	2 592	2 602	4 148	4 177	519.3	121.6	444.5	1 083.5
April	2 258	2 278	3 632	3 772	490.6	118.6	382.0	914.9
May	2 063	2 081	3 804	3 889	525.5	121.0	300.8	1 074.2
June	r 1 857	r 1 864	r 2 927	r 3 050	404.4	77.0	344.3	807.5
July	r 1 317	r 1 324	r 1 832	r 1 919	r 285.7	r 74.5	r 284.6	r 667.5
August	1 477	1 486	2 361	2 430	370.3	75.9	273.1	755.7

(a) Includes dwelling units approved as part of the construction of non-residential building and alterations and additions to existing buildings (including conversions to dwelling units).

(b) From July 2000, value data for both residential and non-residential building approvals will be on a GST inclusive basis.

(c) Valued at \$10,000 or more. Includes conversions of existing buildings into residential buildings.

(d) Valued at \$50,000 or more.

Source: Building Approvals, Australia (Cat. no. 8731.0).

10 TURNOVER OF RETAIL ESTABLISHMENTS(a), NSW AND AUSTRALIA(b)—SEASONALLY ADJUSTED

	Latest period	New South Wales			Australia					
		Latest figure \$m	Change from prior period %	Change from same period prior year %	Latest figure \$m	Change from prior period %	Change from same period prior year %			
								Latest figure	Change	Change
Food retailing	August 2000	1 643.7	2.9	3.1	5 063.0	1.8	3.0			
Department stores	August 2000	400.5	32.5	7.7	1 135.6	28.9	6.2			
Clothing and soft good retailing	August 2000	293.8	7.0	-8.6	786.9	9.8	-6.1			
Household good retailing	August 2000	470.8	10.0	9.7	1 491.9	7.2	7.4			
Recreational good retailing	August 2000	218.1	0.0	11.6	605.4	1.3	-0.5			
Other retailing	August 2000	428.2	8.8	-0.4	1 323.4	5.1	2.3			
Hospitality and services	August 2000	990.6	6.2	17.1	2 256.6	4.1	10.9			
Total value of retail sales	August 2000	4 445.7	7.2	6.2	12 662.8	5.6	4.2			

(a) The figures shown are derived from a monthly survey of retail establishments. Excludes motor vehicle, boat and caravan dealers, service stations, smash repairers, tyre and battery retailers, bread and milk vendors, footwear repairers and electrical appliance repairers n.e.c. Retail establishments which do not have employees are excluded from the survey. Turnover includes retail sales, wholesale sales, takings from repairs, meals and hiring of goods; and commissions from agency activity (e.g. commissions received from collecting dry cleaning, selling lottery tickets etc.).

Source: Retail Trade, Australia (Cat. no. 8501.0).

11 TURNOVER OF RETAIL ESTABLISHMENTS(a), NSW(b)—SEASONALLY ADJUSTED(c)

	Food retailing	Department stores	Clothing and soft good retailing	Household good retailing	Recreational good retailing	Other retailing	Hospitality and services	Total
	\$m	\$m	\$m	\$m	\$m	\$m	\$m	\$m
1999								
June	1 569.0	345.7	310.5	398.2	191.5	405.5	883.1	4 103.5
July	1 555.0	363.2	304.9	404.4	195.7	414.6	852.9	4 090.6
August	1 593.9	371.7	321.6	429.0	195.5	430.1	845.8	4 187.5
September	1 593.8	364.8	318.5	449.8	193.3	427.2	869.3	4 216.7
October	1 588.0	378.0	322.7	460.4	189.5	425.0	848.4	4 211.9
November	1 591.6	373.3	328.9	438.4	184.2	434.1	844.4	4 195.0
December	1 602.5	371.2	322.8	419.3	184.6	444.5	854.9	4 199.9
2000								
January	1 540.5	372.1	310.7	440.0	199.0	421.4	854.7	4 138.3
February	1 546.5	377.3	293.8	455.9	197.4	430.3	862.4	4 163.5
March	1 546.1	370.7	319.6	451.4	200.1	426.4	870.3	4 184.5
April	1 559.2	378.6	301.7	446.2	202.8	428.8	872.8	4 190.0
May	1 552.8	382.1	311.6	459.2	210.2	439.1	875.0	4 229.9
June	1 585.4	459.3	372.7	582.2	202.7	479.6	887.5	4 569.5
July	1 596.9	302.3	274.5	427.9	218.2	393.6	932.6	4 145.9
August	1 643.7	400.5	293.8	470.8	218.1	428.2	990.6	4 445.7

(a) The figures shown are derived from a monthly survey of retail establishments. Excludes motor vehicle, boat and caravan dealers, service stations, smash repairers, tyre and battery retailers, bread and milk vendors, footwear repairers and electrical appliance repairers n.e.c. Retail establishments which do not have employees are excluded from the survey. Turnover includes retail sales, wholesale sales, takings from repairs, meals and hiring of goods; and commissions from agency activity (e.g. commissions received from collecting dry cleaning, selling lottery tickets etc.).

(b) Data from July 2000 reference month onwards are recorded inclusive of GST.

(c) Data for previous months have been revised due to concurrent seasonal adjustment methodology. See Explanatory Notes in Retail Trade, Australia (Cat. no. 8501.0).

Source: Retail Trade, Australia (Cat. no. 8501.0).

12 NEW MOTOR VEHICLE REGISTRATIONS(a), NSW AND AUSTRALIA—SEASONALLY ADJUSTED

	Latest period	New South Wales			Australia		
		Latest figure	Change from prior period	Change from same period prior year	Latest figure	Change from prior period	Change from same period prior year
		no.	%	%	no.	%	%
Passenger vehicles	August 2000	23 263	-0.1	31.3	64 167	-6.5	29.4
Other vehicles (excluding motor cycles)	August 2000	3 684	24.5	6.8	10 902	19.9	1.5
Total registrations (excluding motor cycles)	August 2000	26 947	2.7	27.3	75 069	-3.4	24.4

(a) Includes vehicles (other than those of the defence forces) owned by Government departments and authorities. Excludes mobile plant and equipment, tractors, trailers and non-motorised caravans.

Source: *New Motor Vehicle Registrations, Australia, Preliminary (Cat. no. 9301.0)*.

13 NEW MOTOR VEHICLE REGISTRATIONS(a), NSW—SEASONALLY ADJUSTED

	Passenger vehicles	Other vehicles (excluding motor cycles)	Total (excluding motor cycles)
	no.	no.	no.
1999			
June	19 442	3 363	22 805
July	19 633	3 748	23 381
August	17 713	3 449	21 162
September	18 022	3 553	21 574
October	17 819	3 802	21 621
November	18 426	3 942	22 368
December	19 679	4 395	24 074
2000			
January	17 675	3 672	21 347
February	18 376	3 977	22 352
March	18 314	3 530	21 844
April	17 517	3 451	20 968
May	16 439	3 661	20 100
June	13 911	3 708	17 619
July	23 289	2 945	26 234
August	23 263	3 684	26 947

(a) Includes vehicles (other than those of the defence forces) owned by Government departments and authorities. Excludes mobile plant and equipment, tractors, trailers and non-motorised caravans.

Source: *New Motor Vehicle Registrations, Australia, Preliminary (Cat. no. 9301.0)*.

14 ACCOMMODATION ESTABLISHMENTS(a) NSW AND AUSTRALIA—ORIGINAL

	New South Wales					Australia		
	Unit	Latest period	Latest figure	Change from prior period	Change from same period prior year	Latest figure	Change from prior period	Change from same period prior year
				%	%		%	%
Room nights	'000	June qtr 2000	3 323.9	-1.9	7.2	9 999.9	-0.9	6.1
Room occupancy rate	%	June qtr 2000	58.1	-3.6	0.3	57.1	-1.9	1.6
Takings	\$'000	June qtr 2000	374 005	-6.0	12.4	1 039 478	-4.5	9.8

(a) Licensed hotels with facilities, motels and guest houses and serviced apartments with 15 or more rooms or units.

Source: *Tourist Accommodation, Australia (Cat. no. 8635.0)*.

15 ACCOMMODATION ESTABLISHMENTS(a) SYDNEY AND NSW—ORIGINAL

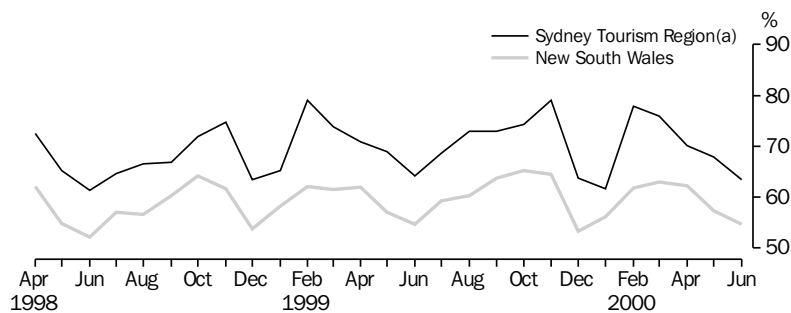
	Sydney Tourism Region(b)			New South Wales		
	Room nights	Room occupancy rate	Takings	Room nights	Room occupancy rate	Takings
	'000	%	\$'000	'000	%	\$'000
1999						
March qtr	1 828.8	72.5	248 997	3 213.2	60.6	360 674
June qtr	1 731.3	68.0	226 273	3 099.9	57.9	332 827
September qtr	1 865.9	71.6	247 543	3 345.0	61.1	375 014
December qtr	1 962.5	72.3	276 165	3 423.1	60.9	395 165
2000						
March qtr 2000	1 980.0	71.7	279 374	3 388.1	60.3	397 869
June qtr 2000	1 902.6	67.1	258 225	3 324.0	58.1	374 005

(a) Licensed hotels with facilities, motels and guest houses and serviced apartments with 15 or more rooms or units.

(b) Excludes Gosford, Wyong and Blue Mountains Statistical Local Areas.

Source: *Tourist Accommodation, Small Area Data, New South Wales (Cat. no. 8635.1.40.001)*.

16 ACCOMMODATION ESTABLISHMENTS,
MONTHLY ROOM OCCUPANCY RATE—ORIGINAL



(a) Excludes Gosford, Wyong and Blue Mountains Statistical Local Areas.

Source: *Tourist Accommodation, Small Area Data, NSW (Prod. no. 8635.1.40.001)*.

17 CONSUMER AND PRODUCER PRICE INDEXES—NSW AND AUSTRALIA

	Unit	New South Wales(a)				Australia(b)		
		Latest period	Latest figure	Change from prior period %	Change from same period prior year %	Latest figure	Change from prior period %	Change from same period prior year %
Consumer Price Index (all groups)	1989-90 =100.0	Sep qtr 2000	131.6	3.6	6.0	130.9	3.7	6.1
Price index of materials used in house building (all groups)	1989-90 =100.0	Sep qtr 2000	130.0	-0.9	5.1	124.5	-0.8	3.3
Price index of materials used in building other than house building (all groups)	1989-90 =100.0	Sep qtr 2000	115.4	-1.6	0.3	115.5	-1.6	0.3

(a) Refers to State capital city—Sydney.

(b) For the Consumer Price Index this is the weighted average of eight capital cities and for the other two indexes, the weighted average of the six State capital cities.

Source: Consumer Price Index, Australia (Cat. no. 6401.0); Price Index of Materials Used in Building Other Than House Building, Six State Capital Cities (Cat. no. 6407.0); Price Index of Materials Used in House Building, Six State Capital Cities (Cat. no. 6408.0).

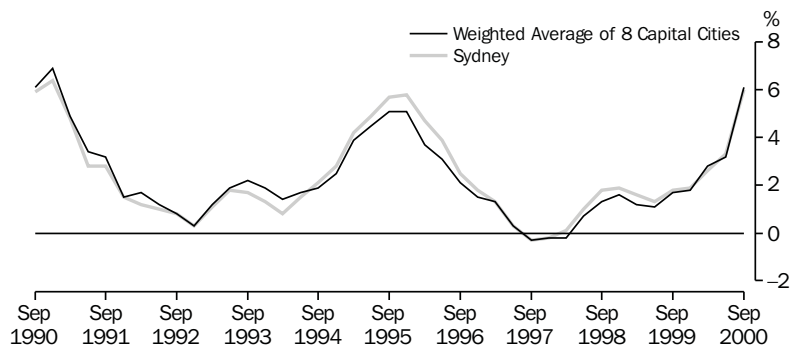
18 CONSUMER AND PRODUCER PRICE INDEXES—NSW(a)

	Consumer Price Index, all groups	Price Index of materials used in house building, all groups	Price Index of materials used in building other than house building, all groups
	1989-90 = 100.0	1989-90 = 100.0	1989-90 = 100.0
1999			
June qtr	123.0	121.8	115.4
September qtr	124.1	123.7	115.1
December qtr	124.7	124.4	115.3
2000			
March qtr	125.8	128.0	116.4
June qtr	127.0	131.2	117.3
September qtr	131.6	130.0	115.4

(a) Refers to State capital city—Sydney.

Source: Consumer Price Index, Australia (Cat. no. 6401.0); Price Index of Materials Used in Building Other Than House Building, Six State Capital Cities (Cat. no. 6407.0); Price Index of Materials Used in House Building, Six State Capital Cities (Cat. no. 6408.0).

19 CONSUMER PRICE INDEX, ANNUAL RATE OF CHANGE



Source: Consumer Price Index (Cat. no. 6401.0).

20 SECURED HOUSING FINANCE COMMITMENTS TO INDIVIDUALS FOR OWNER OCCUPATION—NSW AND AUSTRALIA

	Latest period	New South Wales			Australia		
		Latest figure	Change from prior period	Change from same period prior year	Latest figure	Change from prior period	Change from same period prior year
Lending commitments for the construction or purchase of dwellings							
Construction of dwellings	August 2000	165	-3.2	-42.3	602	11.5	-36.6
Purchase of newly erected dwellings	August 2000	85	22.2	-5.6	212	15.7	-5.0
Purchase of established dwellings(a)	August 2000	1 712	19.0	-4.9	4 076	16.1	3.0
Refinancing of existing dwellings	August 2000	468	7.4	18.2	1 123	9.9	19.0
Lending commitments for alterations and additions	August 2000	91	2.7	-5.0	243	7.9	-5.7
Total lending commitments to individuals for housing(b)	August 2000	2 430	14.9	-5.5	6 013	14.4	-1.0
Total lending commitments to individuals for housing (seasonally adjusted)(b)	August 2000	2 257	7.1	-10.6	5 665	6.1	-5.5

(a) Excludes refinancing.

(b) Excludes alterations and additions.

Source: *Housing Finance for Owner Occupation, Australia (Cat. no. 5609.0)*.

21 SECURED HOUSING FINANCE COMMITMENTS TO INDIVIDUALS FOR OWNER OCCUPATION—NSW

	Lending commitments for the construction or purchase of dwellings					Total lending commitments to individuals for housing(b)	
	Construction of dwellings	Purchase of newly erected dwellings	Purchase of established dwellings(a)	Refinancing of existing dwellings	Lending commitments for alterations and additions	Original	Seasonally adjusted
1997-98	2 625	1 280	14 445	3 573	1 174	21 923	..
1998-99	2 990	1 147	16 761	4 026	1 126	24 925	..
1999-2000	3 268	1 129	21 637	4 993	1 271	31 027	..
1999							
June	300	116	1 851	418	105	2 686	2 476
July	271	96	1 786	335	93	2 489	2 410
August	286	90	1 800	396	96	2 572	2 525
September	315	101	1 841	394	106	2 652	2 524
October	290	104	1 956	418	110	2 768	2 993
November	329	115	2 122	460	120	3 026	2 889
December	275	90	1 893	415	105	2 672	2 792
2000							
January	226	70	1 404	309	83	2 010	2 712
February	324	103	1 759	423	114	2 609	2 709
March	296	101	1 956	488	123	2 842	2 428
April	213	77	1 581	358	94	2 229	2 406
May	246	94	1 909	524	119	2 772	2 428
June	197	86	1 630	474	105	2 387	2 219
July	r 170	69	r 1 439	r 436	89	r 2 114	r 2 107
August	165	85	1 712	468	91	2 430	2 257

(a) Excludes refinancing.

(b) Excludes alterations and additions.

Source: *Housing Finance for Owner Occupation, Australia (Cat. no. 5609.0)*.

22 NSW GOVERNMENT FINANCE, GENERAL GOVERNMENT SECTOR

	Preliminary Actual	Estimates
	1998-99	1999-2000
	\$m	\$m
Current receipts		
Stamp duties	3 947	4 653
Payroll tax	3 617	3 748
Land tax	958	929
Motor vehicle taxes	1 055	1 006
Gaming and betting	1 419	1 568
Commonwealth safety net taxes	1 975	2 017
Other taxes	1 251	1 276
Commonwealth general purpose grants	4 687	5 183
Commonwealth specific purpose grants	3 464	3 517
Dividends/tax equivalents	1 280	1 365
Other current receipts	1 316	1 440
<i>Total current receipts</i>	24 969	26 702
Current payments		
Interest payments	1 393	1 102
Superannuation	1 499	2 266
Subsidies to non-budget sector		
Redundancies	n.a.	41
Services	n.a.	972
Total	990	1 013
Departmental payments		
Redundancies	n.a.	86
Health	n.a.	6 105
Education	n.a.	5 578
Law and order(a)	n.a.	1 904
Community services	n.a.	1 295
Other	n.a.	6 435
Total	20 406	21 403
Treasurer's advances(b)
Less User charges	-2 092	-2 361
<i>Total current outlays</i>	22 196	23 423
Current result surplus/deficit (-)	2 773	3 279
Capital receipts—		
Commonwealth specific purpose grants	831	807
Other capital receipts	437	79
<i>Total capital receipts</i>	1 268	886
Capital outlays—		
Gross fixed capital payments	2 946	2 507
Capital grants	1 102	1 078
Less Asset sales	-597	-289
<i>Total capital outlays</i>	3 451	3 296
Capital result surplus/deficit (-)	-2 183	-2 410
Government Finance Statistics result surplus/deficit (-)	590	869

(a) Includes Attorney Generals Department, Department of Corrective Services and Police Services.

(b) Expenditure from the Treasurer's Advance is included in the relevant current payments figures.

Source: Financial Statement released by NSW Treasury. Figures may differ from data published in annual ABS publications.

23 ACTUAL PRIVATE NEW FIXED CAPITAL EXPENDITURE, CURRENT PRICES, NSW AND AUSTRALIA—TREND

Type of asset	Latest period	New South Wales			Australia		
		Latest figure	Change from prior period	Change from same period prior year	Latest figure	Change from prior period	Change from same period prior year
		\$m	%	%	\$m	%	%
New buildings and structures	Jun qtr 2000	968	0.8	0.9	2 966	5.6	-5.1
Equipment, plant and machinery	Jun qtr 2000	2 895	3.4	13.8	7 529	-1.2	-1.0
Total	Jun qtr 2000	3 863	2.7	10.3	10 495	0.7	-2.2

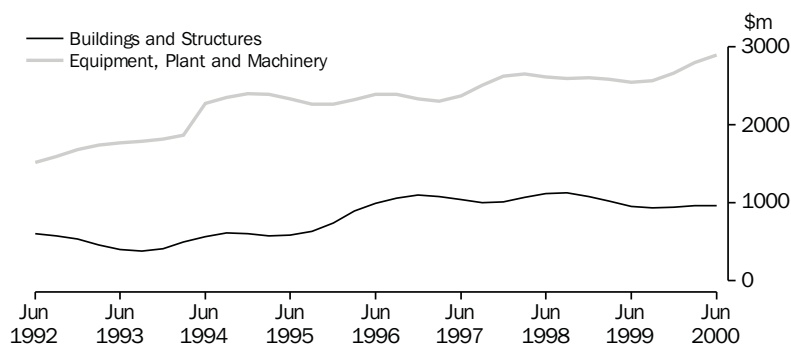
Source: State Estimates of Private New Capital Expenditure (Cat. no. 5646.0).

24 ACTUAL PRIVATE NEW FIXED CAPITAL EXPENDITURE, CURRENT PRICES, NSW—TREND

	Type of asset		
	New buildings and structures	Equipment, plant and machinery	Total
	\$m	\$m	\$m
1999			
March qtr	1 018	2 585	3 603
June qtr	959	2 543	3 502
September qtr	935	2 562	3 497
December qtr	949	2 666	3 615
2000			
March qtr	960	2 800	3 760
June qtr	968	2 895	3 863

Source: State Estimates of New Capital Expenditure (Cat. no. 5646.0).

25 ACTUAL PRIVATE NEW FIXED CAPITAL EXPENDITURE, CURRENT PRICES, NSW—TREND



Source: State Estimates of New Capital Expenditure (Cat. no. 5646.0).

26 INTERNATIONAL TRADE, IMPORTS(a) AND EXPORTS(b)—NSW AND AUSTRALIA

	Latest period	New South Wales			Australia		
		Latest figure	Change from prior period	Change from same period prior year	Latest figure	Change from prior period	Change from same period prior year
		\$m	%	%	\$m	%	%
Overseas imports into NSW	August 2000	4 988	10.6	31.1	10 743	9.9	21.1
Total overseas exports(c)	August 2000	1 814	2.1	18.2	8 964	1.3	28.6
Export commodities and SITC(d) code							
Meat and meat preparations (01)	August 2000	98	-2.2	16.3	419	-5.4	20.2
Cereals and cereal preparations (04)	August 2000	143	3.1	22.7	447	14.5	22.3
Wool and other animal hair (268)	August 2000	66	-0.1	30.2	218	-14.1	17.0
Coal, coke and briquettes (32)	August 2000	301	-5.1	8.8	810	-6.7	12.2
Iron and steel (67)	August 2000	66	3.4	37.1	96	-5.2	-6.0
Aluminium (684)	August 2000	135	4.8	41.5	423	28.1	33.1
Office machines and automatic data processing machines (75)	August 2000	26	-15.3	-26.4	42	-9.7	-31.0

(a) Figures shown are Customs value.

(b) Figures shown are Free On Board (FOB) values.

(c) Excludes re-exported goods.

(d) Standard International Trade Classification Revision 3.

Source: ABS unpublished data, International Trade database.

27 INTERNATIONAL TRADE, IMPORTS(a) AND EXPORTS(b)—NSW

	Overseas exports of SITC(c) commodities								
	Overseas imports into NSW	Total overseas exports(d)	Meat and meat preparations (01)	Cereals and cereal preparations (04)	Wool and other animal hair (268)	Coal, coke and briquettes (32)	Iron and steel (67)	Aluminium (684)	Office machines and automatic data processing machines (75)
	\$m	\$m	\$m	\$m	\$m	\$m	\$m	\$m	\$m
1998-99	42 142	17 948	948	1 234	685	3 766	958	1 151	333
1999-2000	48 019	18 947	1 047	1 261	826	3 092	830	1 341	380
1999									
June	3 594	1 451	76	113	46	260	59	95	31
July	3 497	1 514	83	110	54	298	45	104	33
August	3 806	1 535	85	106	50	277	48	96	35
September	4 098	1 573	81	94	69	249	59	107	29
October	3 765	1 553	91	103	78	239	53	105	29
November	4 272	1 577	90	107	93	244	67	104	34
December	3 975	1 577	94	112	83	211	68	112	28
2000									
January	3 462	1 331	68	68	55	261	50	101	22
February	r 3 731	1 516	86	114	72	226	61	122	32
March	r 4 341	1 637	95	123	78	238	79	132	43
April	r 3 534	1 610	87	94	59	285	99	109	35
May	r 4 588	r 1 765	93	118	69	295	108	122	30
June	r 4 876	r 1 761	93	112	66	268	94	129	29
July	r 4 509	r 1 776	r 101	138	r 66	r 318	64	r 129	r 31
August	4 988	1 814	98	143	66	301	66	135	26

(a) Figures shown are Customs value.

(b) Figures shown are Free On Board (FOB) values.

(c) Standard International Trade Classification Revision 3.

(d) Excludes re-exported goods.

Source: ABS unpublished data, International Trade database.

FOR MORE INFORMATION...

- INTERNET* **www.abs.gov.au** the ABS web site is the best place to start for access to summary data from our latest publications, information about the ABS, advice about upcoming releases, our catalogue, and Australia Now—a statistical profile.
- LIBRARY* A range of ABS publications is available from public and tertiary libraries Australia-wide. Contact your nearest library to determine whether it has the ABS statistics you require, or visit our web site for a list of libraries.
- CPI INFOLINE* For current and historical Consumer Price Index data, call 1902 981 074 (call cost 77c per minute).
- DIAL-A-STATISTIC* For the latest figures for National Accounts, Balance of Payments, Labour Force, Average Weekly Earnings, Estimated Resident Population and the Consumer Price Index call 1900 986 400 (call cost 77c per minute).

INFORMATION SERVICE

Data which have been published and can be provided within five minutes are free of charge. Our information consultants can also help you to access the full range of ABS information—ABS user-pays services can be tailored to your needs, time frame and budget. Publications may be purchased. Specialists are on hand to help you with analytical or methodological advice.

- PHONE* **1300 135 070**
- EMAIL* **client.services@abs.gov.au**
- FAX* 1300 135 211
- POST* Client Services, ABS, GPO Box 796, Sydney 1041

WHY NOT SUBSCRIBE?

ABS subscription services provide regular, convenient and prompt deliveries of ABS publications and products as they are released. Email delivery of monthly and quarterly publications is available.

- PHONE* 1300 366 323
- EMAIL* subscriptions@abs.gov.au
- FAX* 03 9615 7848
- POST* Subscription Services, ABS, GPO Box 2796Y, Melbourne 3001



2130710011008
ISSN 1031-8534

RRP \$17.50